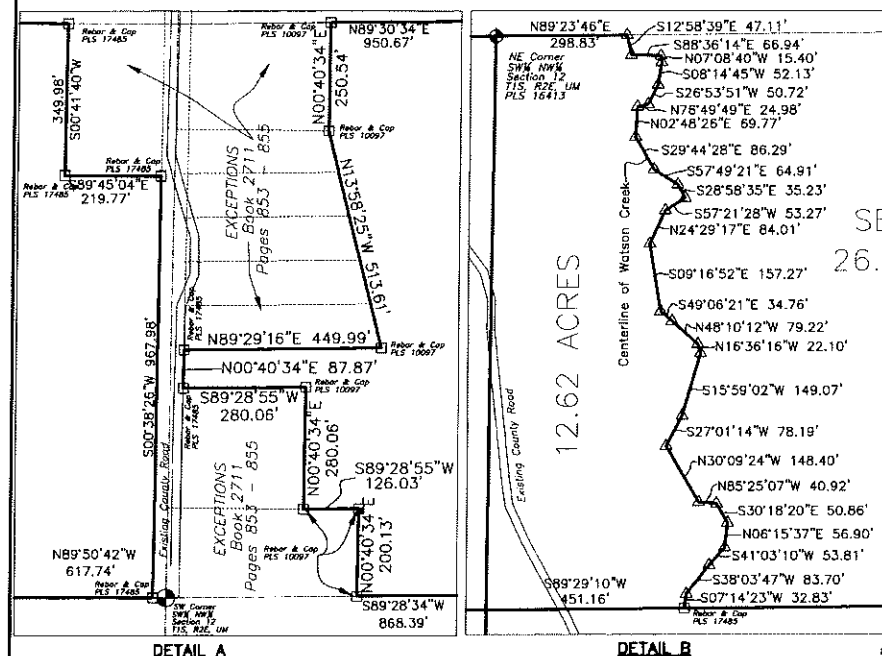
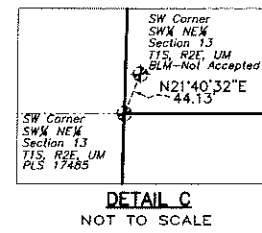
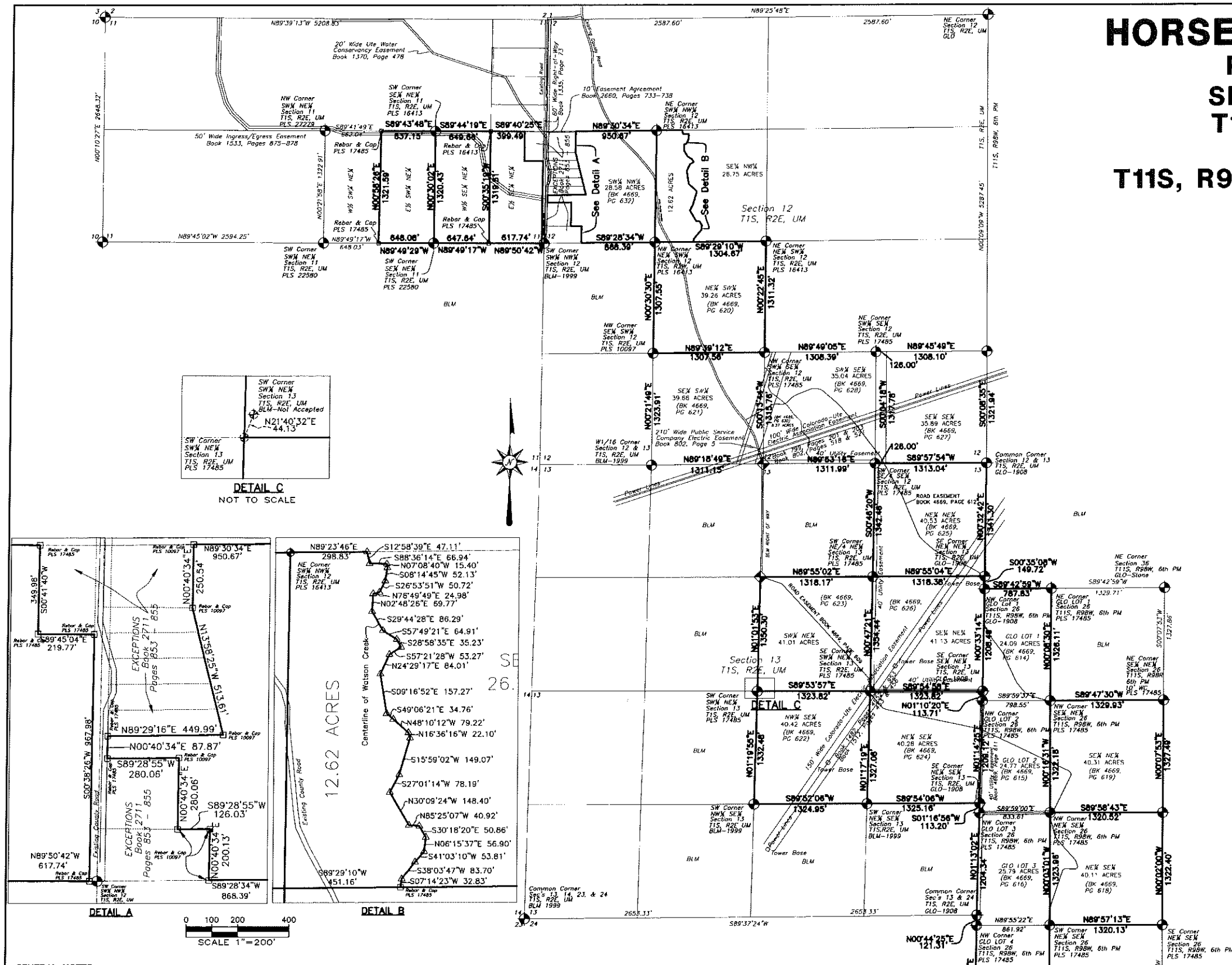


HORSE MOUNTAIN RANCHES

PARCELS LOCATED IN SECTIONS 11, 12, AND 13 T1S, R2E, UTE MERIDIAN AND SECTION 26 T11S, R98W, 6TH PRINCIPAL MERIDIAN



LAND SURVEY DEPOSITS
 MESA COUNTY SURVEYOR'S OFFICE
 BOOK 1 PAGE 126
 DATE JUNE 20, 2008
 DEPOSIT NO. 4188-07

GENERAL NOTES

Easement and Title Information provided by Land Title Guarantee Company, Policy No. LTA065005497, dated September 7, 2007.

Basis of bearings is the West line of the Northwest Quarter of Section 11 which bears North 00 degrees 10 minutes 27 seconds East, a distance of 2648.32 feet, established by observation of the SIMS control network. Both monuments on this line are Aliquot Monuments Survey Markers, as shown on the face of this plat.

Property corners located during this survey that were within 0.25 feet of the calculated point were accepted as being "in position".

All units shown hereon in U.S. Survey feet.

NOTICE: ACCORDING TO COLORADO LAW YOU MUST COMMENCE ANY LEGAL ACTION BASED UPON ANY DEFECT IN THIS SURVEY WITHIN THREE YEARS AFTER THE FIRST DISCOVERY OF SUCH DEFECT. IN NO EVENT MAY ANY ACTION BASED UPON ANY DEFECT IN THIS SURVEY BE COMMENCED MORE THAN TEN YEARS FROM THE DATE OF CERTIFICATION SHOWN HEREON.

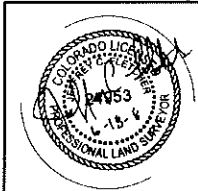
LEGEND

- ALIQUOT SURVEY MARKER, AS NOTED
- FOUND REBAR AND CAP, AS NOTED
- SET ALUMINUM CAP ON No. 5 REBAR, PLS 24953
- ◆ SET 3/4" ALUMINUM CAP ON No. 6 REBAR, PLS 24953
- △ CALCULATED POINT - NOT SET

SURVEYOR'S CERTIFICATION

I hereby certify that this plat represents a field survey completed under my direct supervision during December, 2007, and that both have been completed according to the standards of practice and the laws of the State of Colorado, and are correct to the best of my knowledge.

CERTIFIED THIS 18TH DAY OF JUNE, 2008



HORSE MOUNTAIN RANCHES
 SURVEY OF PARCELS LOCATED IN SECTIONS 11, 12, AND 13 T1S, R2E, UTE MERIDIAN AND SECTION 26 T11S, R98W, 6TH PRINCIPAL MERIDIAN MESA COUNTY, COLORADO

High Desert Surveying, LLC
 1673 Highway 50 Unit C
 Grand Junction, Colorado 81503
 Telephone: 970-254-8649 Fax 970-241-0451

PROJ. NO. 07-201	SURVEYED/DRAWN	CHK'D	SHEET	OF
DATE: DEC, 2007	smg	smg	1	1

DEPOSIT 4188-08